

Performance you can trust

No of Pages	04
Issue No	04
Date	07/15
Ref	Protread

Pro-tread™

Provides a safe, anti-slip surface for areas of heavy – duty pedestrian traffic

Modular PRO-TREAD is an interlocking modular anti-slip renovation stair tread system, consisting of a range of nosings, planks and chamfer tail piece, designed to repair worn, dangerous stairways. The long lasting treads provide a safe, anti-slip surface for areas of heavy-duty pedestrian traffic.

Pro-tread™ can be installed over existing stairs of virtually any material, including concrete, metal, wood, marble and stone. Each tread comes pre-drilled.

Part Code	Description
40806	150mm wide Nosing
40810	50mm wide Tread
40812	150mm wide Tread
40820	30mm wide Chamfer

Features & Benefits

- ❑ Epoxy anti-slip surface provides long lasting durability
- ❑ Suitable for both internal and external use
- ❑ Quick and simple to install and easily maintained
- ❑ Impact resistant to give product longevity
- ❑ Excellent anti-slip properties in both dry and wet conditions
- ❑ Infill available in solid colour or with a band of contrasting colour to give high visibility – DDA compliant, sightline and nosing
- ❑ Chemical and stain resistant
- ❑ Withstands high volumes of traffic with a design life of 15 years
- ❑ SRA compliant

Technical Data (Typical)

Description	Anti-slip safety stair tread
Grade	Pedestrian
Standard colours	Black, grey, white, red and yellow, (other colours available upon request)
Grade of aluminium alloy	6063-T6 to meet BS1474
Chemical resistance	Mineral acids, dilute alkalis, detergents, alcohol, paraffin, white spirit, vegetable oils, diesel, lubricating oils and greases. Our technical department can give specific advice where required.
Service temperature	-20 to +80C
Impact resistance	Treads do not chip or crack under impact from a 0.9kg steel ball dropped from a height of 2.4m
Pendulum slip Resistance using TRRL rubber (BS7976) Dry Pendulum Test Values (PTV) Potential For Slip	75 Low slip potential*

T +44 (0) 113 232 2600
F +44 (0) 113 232 2740
E customer-service@rocol.com
www.rocol.com

ROCOL House, Swillington, Leeds LS26 8BS

Registered Company No. 559693 VAT No. 742 0531 67
Registered Office: Admiral House, St Leonard's Road, Windsor, Berkshire SL4 3BL

ROCOL A division of **ITW** Ltd



BS EN ISO 9001
Certificate No. FM 12448



BS EN ISO 14001
Certificate No. EMS 67596



OHSAS 18001
Certificate No. OHS 78173



INVESTOR IN PEOPLE

Performance you can trust

*Potential to slip as interpreted in the guideline from UKSRG, 2011 recommended by the HSE

Slip potential classification, based on pendulum test values (PTV)	PTV
High slip potential	0-24
Moderate slip potential	25-35
Low slip potential	36 +

Fixings Guide

Note: Pro-tread™ stair treads must be fixed using a mechanical fixing system

SUBSTRATE	FIXING TYPE	CONSTRUCTION ADHESIVE
Timber	No 8 (4mm) stainless posi drive countersunk screw	Yes
Concrete	No 8 (4mm) stainless posi drive countersunk screw and plug (red)	Yes
Chequer plate	Drill screw	Yes

Instructions for Installation

It is important that these instructions are followed carefully for maximum performance of the Pro-tread™ stair treads.

Past experience has shown that the following equipment may be required for the installation of Pro-tread™

- Hammer
- Spanner
- Tape measure
- Construction adhesive
- Hammer action drill with 5.5-6mm masonry/metal drill bit
- Screwdriver
- Marker pen
- Spirit level (for use as a straight edge)
- Float
- 6 x fixing screws and plugs per linear metre

Surface Preparation

1. Before fixing the Pro-tread™ stair treads it is important to ensure that the surface is clean, dry, free from dust /loose material and capable of holding a mechanical fixing. (Fig 1)
2. The surface should be checked to ensure it is not worn or uneven, this can be done by placing a straight edge (e.g. spirit level) on the surface. If the surface is worn or uneven then it should be levelled before the panel is installed. (Fig 2)

T +44 (0) 113 232 2600
 F +44 (0) 113 232 2740
 E customer-service@rocol.com
 www.rocol.com

ROCOL House, Swillington, Leeds LS26 8BS

Registered Company No. 559693 VAT No. 742 0531 67
 Registered Office: Admiral House, St Leonard's Road, Windsor, Berkshire SL4 3BL

ROCOL A division of **ITW** Ltd



BS EN ISO 9001
 Certificate No. FM 12448



BS EN ISO 14001
 Certificate No. EMS 67596



OHSAS 18001
 Certificate No. OHS 78173



INVESTOR IN PEOPLE

Performance you can trust

3. The Pro-tread™ should be placed into position onto the step and used as a template to mark the hole locations.

Remove the tread and drill the pre-marked holes using a 5.5-6mm bit to the depth of the plugs supplied. (Fig 3)

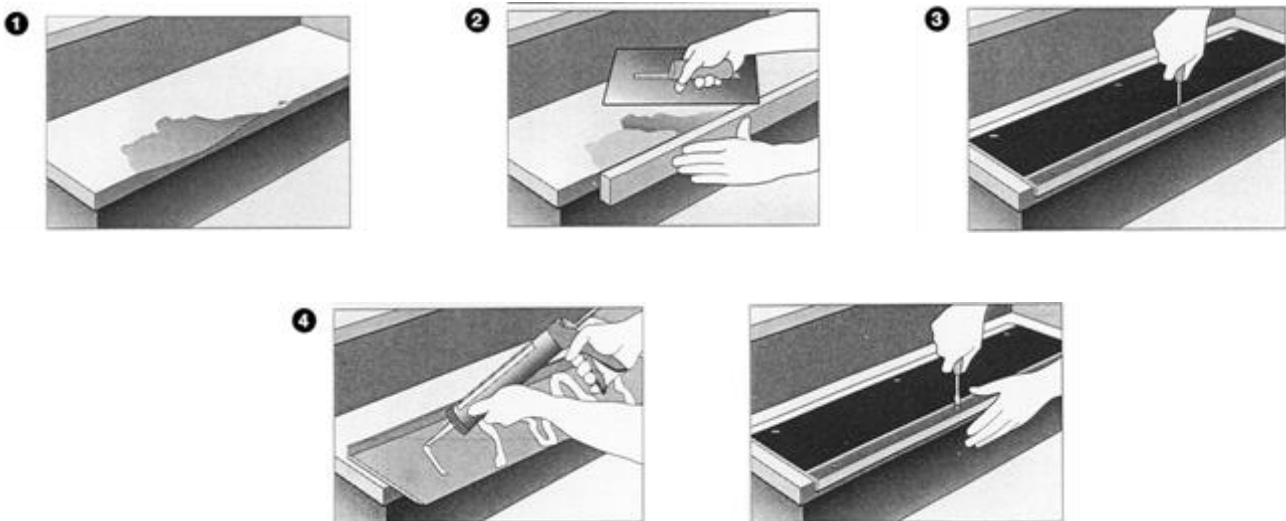
NB: No drilling is required for timber substrates. Screw directly into timber.

4. Insert plugs.
5. Apply a 5-6mm wide bead of construction adhesive to the underside of the panel, 10mm inside the perimeter and also in a zig zag pattern across the main body. The coverage should be 150ml of construction adhesive per linear metre of tread. (Fig 4)

Construction adhesive is recommended to provide sound-deadening properties.

6. Re-position the tread, pressing firmly down to ensure maximum overall contact of the adhesive and immediately secure into place with the appropriate fixings. (Fig 5)

Should you require more specific installation details please contact our Technical Department.



Maintenance

Pro-tread™ stair treads should be regularly cleaned to prevent the accumulation of oil, grease, dirt and other contaminants on the walking surface, which may reduce its anti-slip properties. To clean use either of the following methods:

1. Warm water with a mild detergent and a strong bristled brush.
2. Pressure jet cleaning (no more than 1000 psi (68 bar) and up to 80°C is recommended to avoid damage to the wearing course).

T +44 (0) 113 232 2600
F +44 (0) 113 232 2740
E customer-service@rocol.com
www.rocol.com

ROCOL House, Swillington, Leeds LS26 8BS

Registered Company No. 559693 VAT No. 742 0531 67
Registered Office: Admiral House, St Leonard's Road, Windsor, Berkshire SL4 3BL

ROCOL A division of *ITW* Ltd



BS EN ISO 9001
Certificate No. FM 12448



BS EN ISO 14001
Certificate No. EMS 67596



OHSAS 18001
Certificate No. OHS 78173



INVESTOR IN PEOPLE

Technical Data

ROCOL[®]

Performance you can trust

After cleaning, the surface should be thoroughly rinsed with clean water and left to dry before allowing back into service.

Whilst Pro-tread™ has a high resistance to solvents, oils and chemicals, it is not recommended that these substances be used as cleaning agents.

Accidental spillages of such substances should be removed immediately using either of the cleaning methods above.

Limitations

- Pro-tread™ stair treads are specifically designed to be used for the renovation of existing surfaces (overlay) and should not be installed on unsupported areas (load bearing).

Health & Safety

For further information, please contact us at the address below:

Minimum Precautions

Wear protective clothing, gloves and goggles and dust mask during installation.

Disclaimer: *The information in this publication is based on our experience and reports from customers. There are many factors outside our control or knowledge which affect the use and performance of our products, for which reason it is given without responsibility.*

T +44 (0) 113 232 2600
F +44 (0) 113 232 2740
E customer-service@rocol.com
www.rocol.com

ROCOL House, Swillington, Leeds LS26 8BS

Registered Company No. 559693 VAT No. 742 0531 67

Registered Office: Admiral House, St Leonard's Road, Windsor, Berkshire SL4 3BL

ROCOL A division of **ITW** Ltd



BS EN ISO 9001
Certificate No. FM 12448



BS EN ISO 14001
Certificate No. EMS 67596



OHSAS 18001
Certificate No. OHS 78173



INVESTOR IN PEOPLE